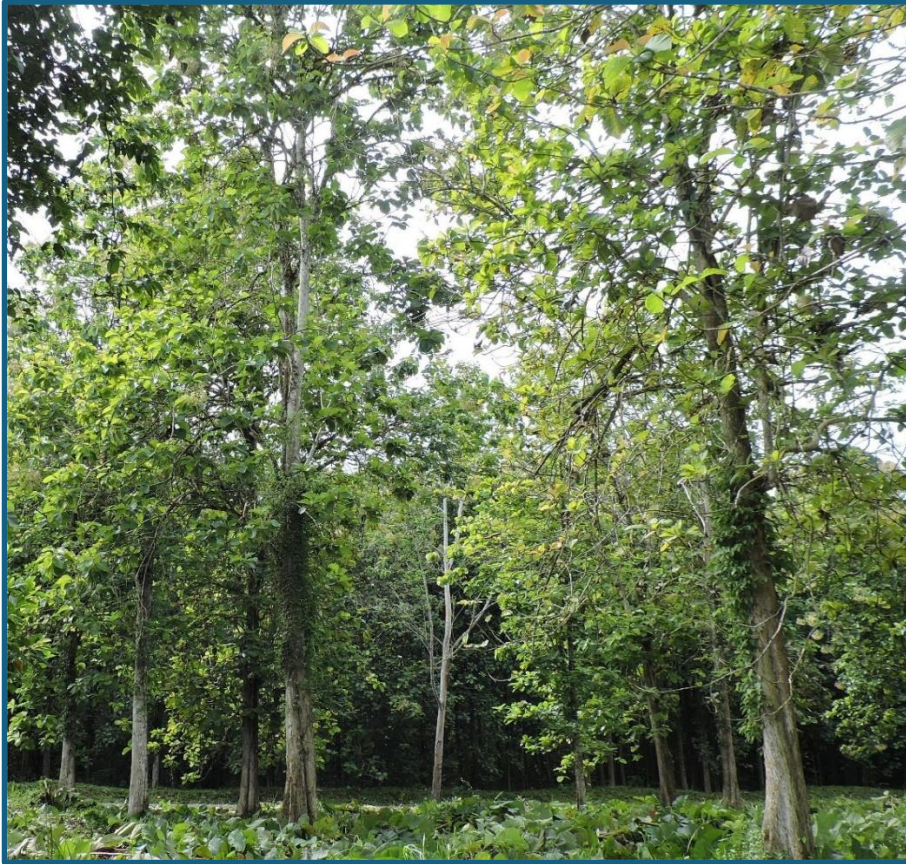




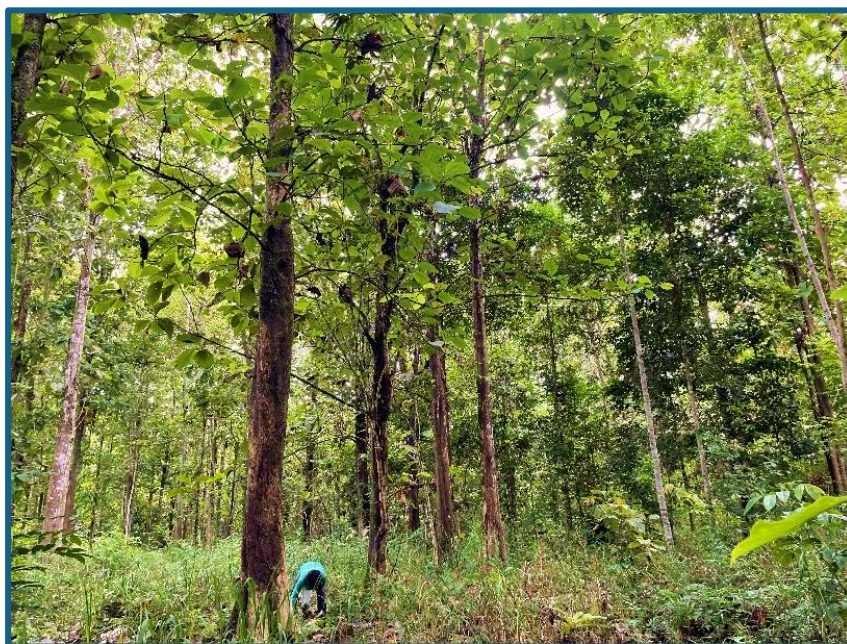
**TALIWAS SEED ORCHARD (age ~ 28 years)**



## 2. SEED SOURCE INFORMATION - PERLIS SEED ORCHARD

<b>A. SITE INFORMATION</b>  Locality: KM 13, Taliwas District: Lahad Datu State: Sabah Country: Malaysia Latitude: 4°58'N Longitude: 118° 13' E Altitude: 40m above sea level Slope gradient: 0° Soil type: ex-cocoa plot, pH 6 – 6.5 Climate: No distinct dry season; Mean Annual precipitation: 2,500mm Av Monthly Temp range: 26-28°C	<b>B. SEED SOURCE INFORMATION</b>  Seed origin: Mata Ayer, Perlis, Peninsular Malaysia  Year of establishment: December 1993 Area: 4 ha Final Trees: 245 Density: 61/ha Total Initial Trees: 1028
<b>C. SEEDLOT INFORMATION</b>  Germination rate : 75 - 80% Fruits/Kg: 1,910 Price/Kg: USD350.00, ex Kota Kinabalu, Sabah Quantity available: 15Kg	

### PERLIS SEED ORCHARD (age 32 years)



### 3. SEED SOURCE INFORMATION - LUASONG SEED ORCHARD (C 311)

<b>A. SITE INFORMATION</b>  Locality: Compartment 311, Luasong District: Tawau State: Sabah Country: Malaysia Latitude: 4° 35' N Longitude: 117° 40' E Altitude: 130 - 170m above sea level Slope gradient: 15° Soil type: mudstone-minor sandstone soils, pH 4.8 – 5.6 Climate: No distinct dry season; Mean Annual Rainfall: 2,500mm; Monthly Range Temp: 26-28°C	<b>B. SEED SOURCE INFORMATION</b>  Seed Source/Origin: Progeny /provenance trial comprising of 42 families (15 bulks and 27 open-pollinated seedlots from individual clones in seed orchard, Ivory Coast)  Year of establishment: 1997 Area: 3.24 ha Final Trees: 249 Density: 82.3/ha  <b><i>Ref. Goh &amp; Monteuis, 2009</i></b>
<b>C. SEED LOT INFORMATION</b> Germination rate: 70 – 80% Fruits/Kg: 1,310 Price/Kg: USD400.00, ex Kota Kinabalu, Sabah Quantity available: 10Kg	

#### **C311 LUASONG SEED ORCHARD (age 28 years)**

